

## Exporting grids from Revit to RAM.

The Revit-RAM workflow is not as developed for a smooth and easy import and export between the 2 software. Most people who have tried exchanging information between RAM and Revit have discovered that most of the entities do not get transferred. For example: Slabs, some custom Revit families to name a few.

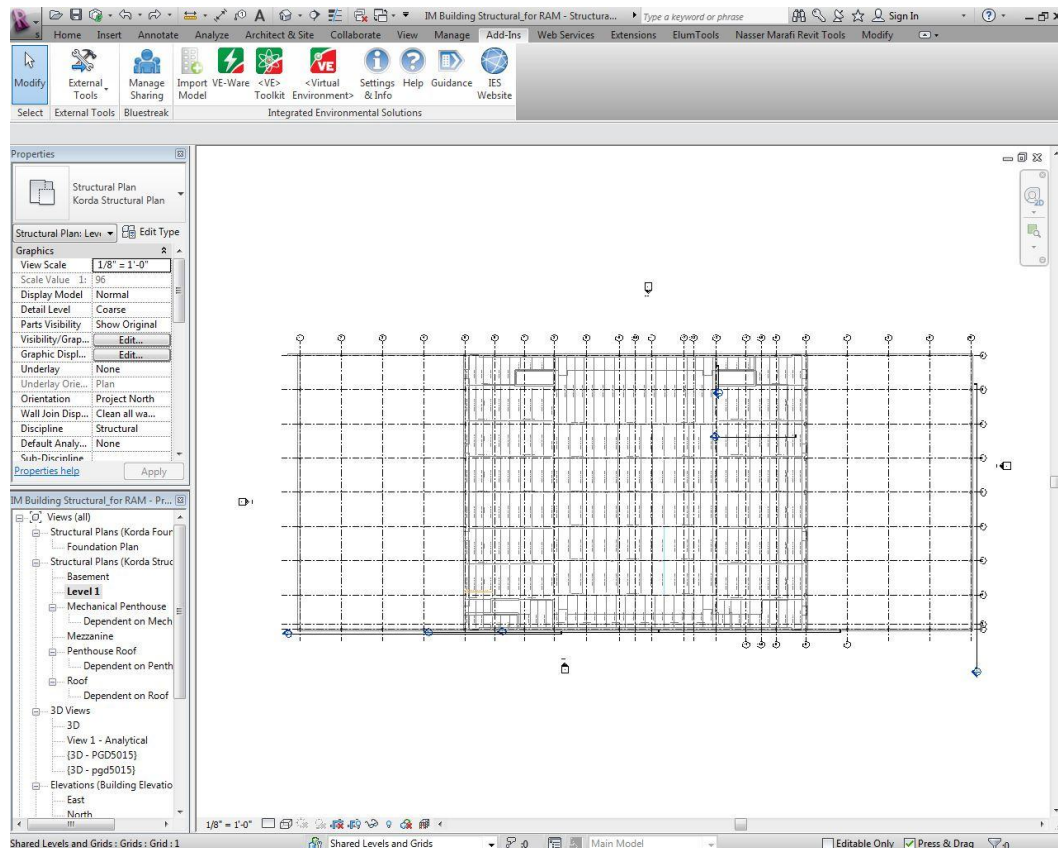
In expansion projects, it becomes important for a structural engineer to re-model an existing structure in RAM to analyze the existing structural system.

**Problem:** It is impossible to perform an accurate transfer of revit structural file to RAM.

**Solution:** As modeling in structural engineering software is a meticulous process to provide accurate results, the best option is to keep the two models - Revit and RAM - as separate and transfer the information manually. This can be made easy by transferring only grids from Revit to RAM.

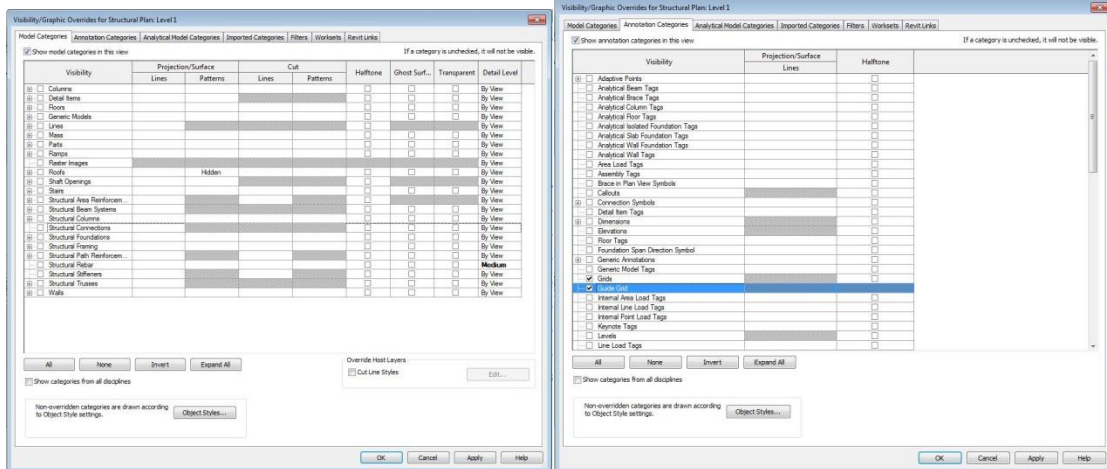
Here is the procedure that describes how the transfer of only grids from Revit to RAM is carried out.

1



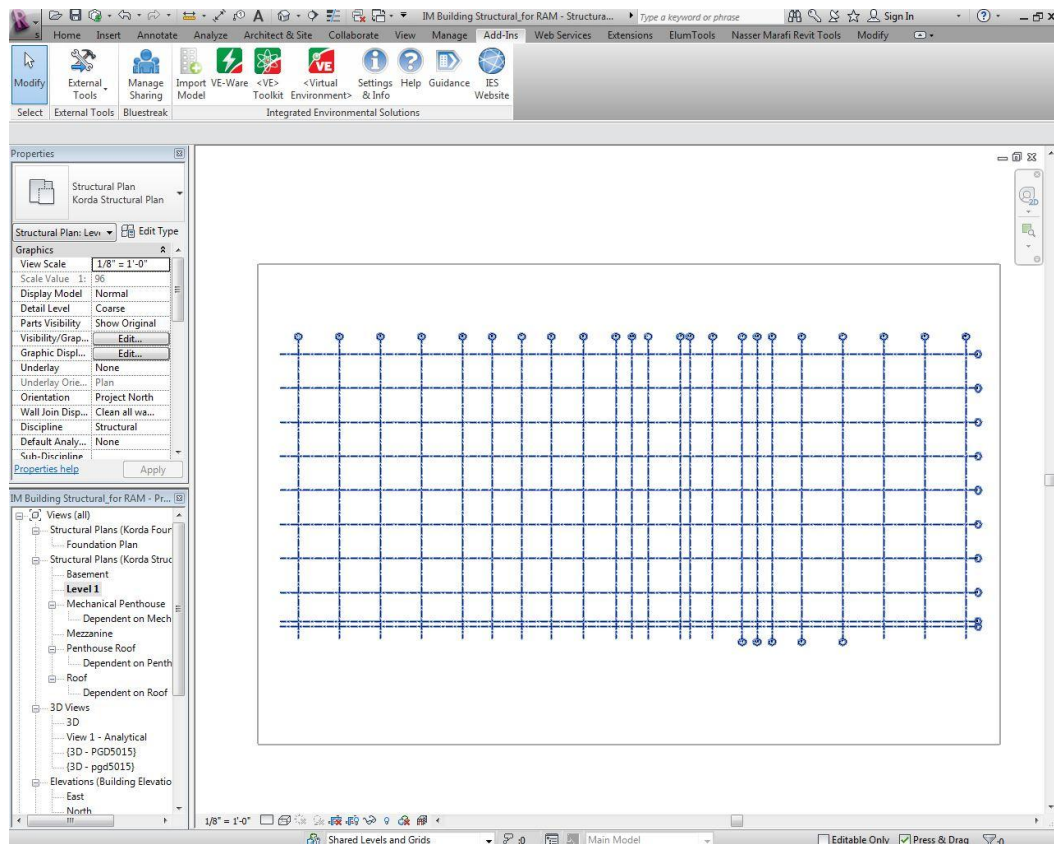
Open the structural model in Revit Structure 2012. Go to plan view for example: Level 1 as seen above.

2



Hide all the structural elements and annotative elements using the file Visibility/Graphics command. Keep the checkmarks on for the grids only. Click Apply and OK.

3



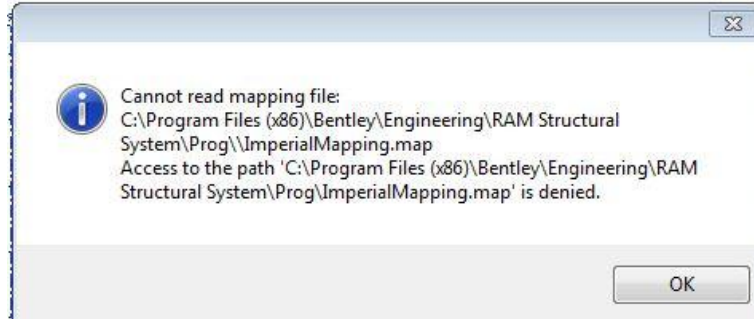
After you hit OK in Visibility/Graphics setting, this will be viewed in the window. Only the grid layout is visible.

4



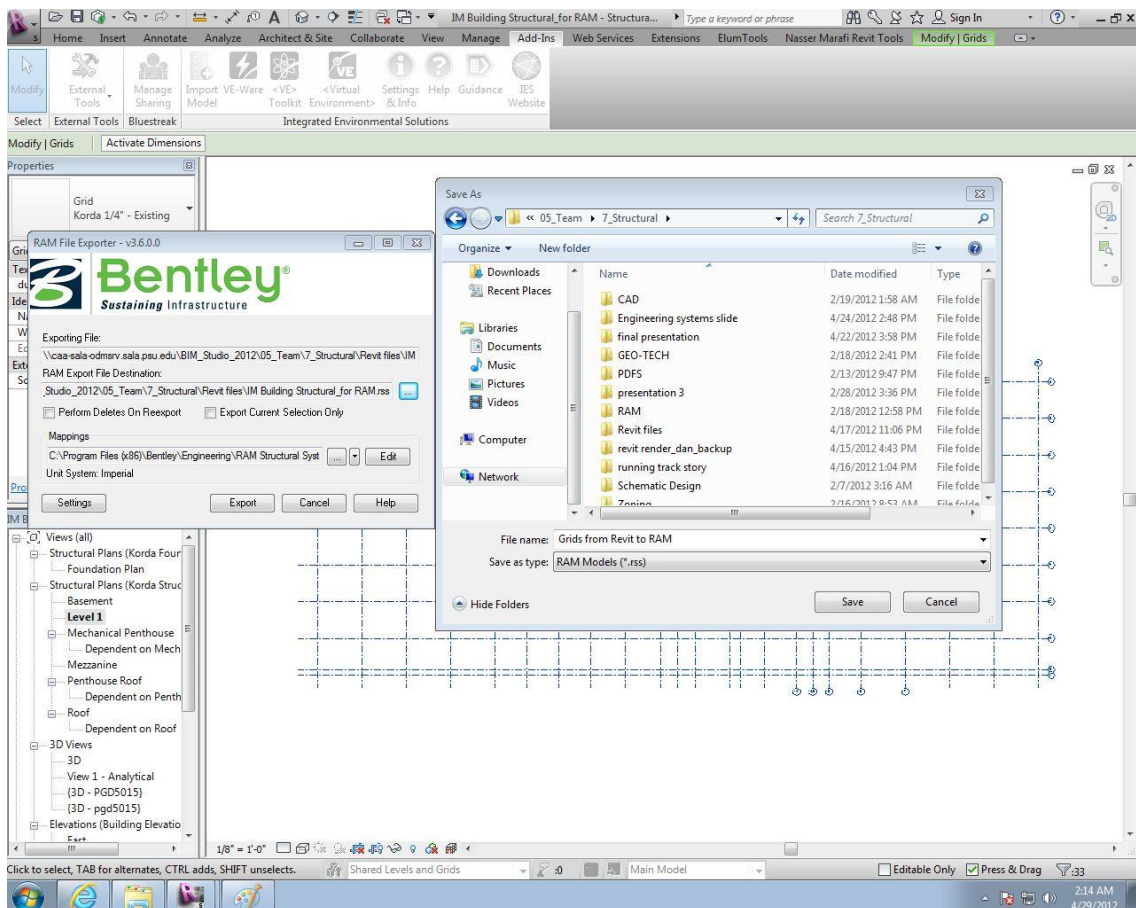
Click on the Add-ins tab → External Tools → Export Model to RAM.

5



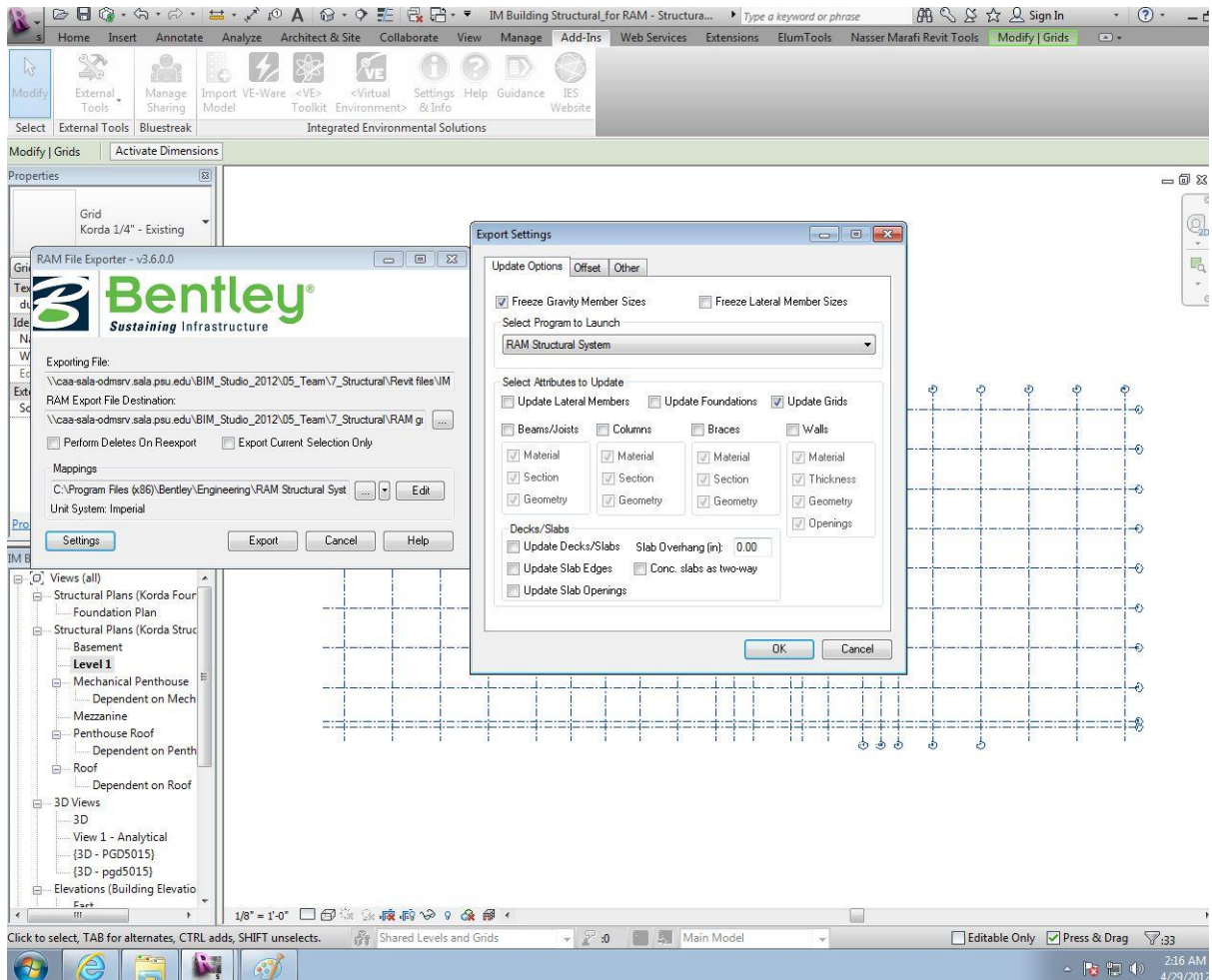
Please **ignore** this dialogue box by clicking OK.

6



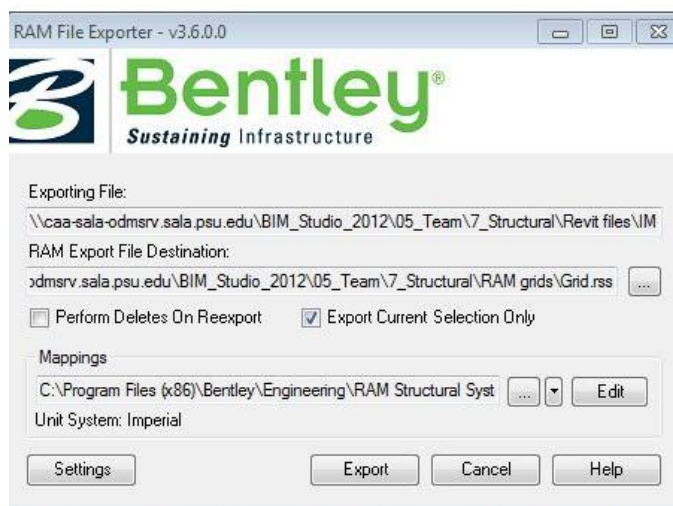
Click on the button next to RAM Export File Destination and select a location to save the RAM file.

7



Click on Settings button to view the Export settings box. In the export settings, uncheck all attributes except Update Grids under Select Attribute to Update → Hit OK.

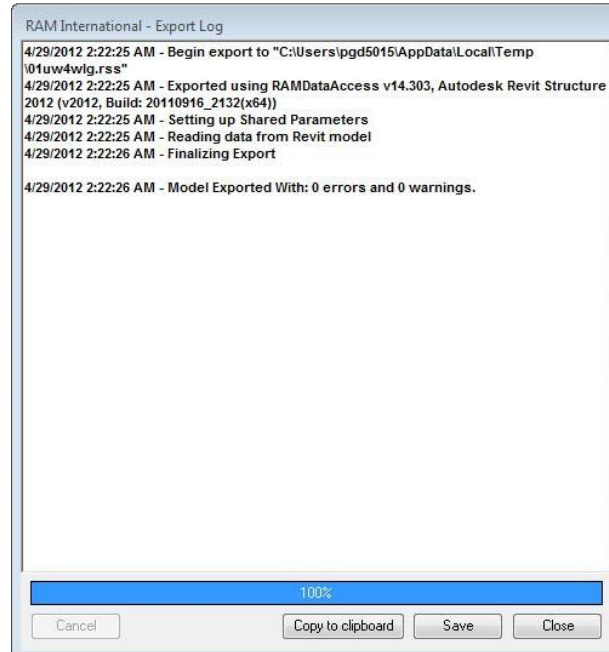
8



Make sure the ☒ Export Current Selection Only button is check marked. This will make sure that only the selected entities in the Revit file are exported to RAM. In this case, only the grids. Once that is done → click Export.

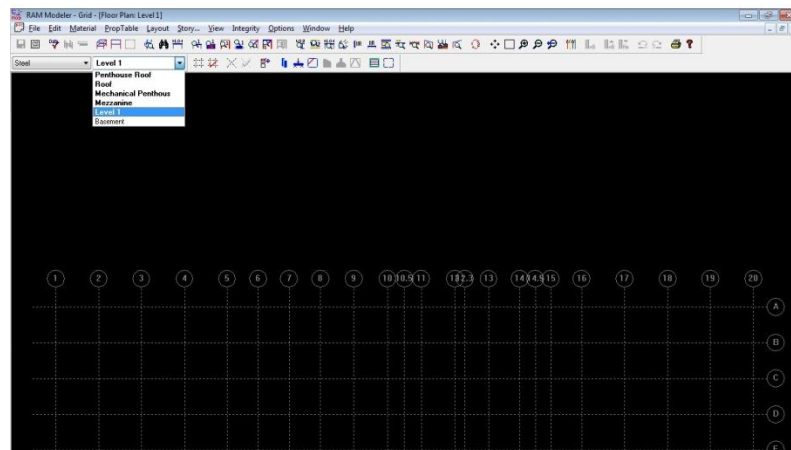


9



This is the box that should appear after the export is processed.

10



After the exporting is done, the RAM Structural System application opens automatically. As you select Level 1 on RAM you will see the entire Grid layout is transferred from Revit to RAM. Now you are ready to start modelling in RAM.